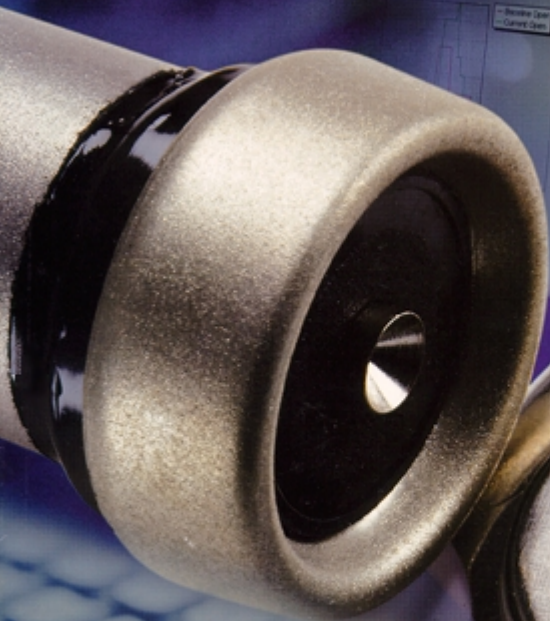


STATUS
Valve Performance Solutions



TOPWORX

SMART TAG™ Valve Identification System

The Status Smart Tag™ is a revolutionary new valve identification system that can be used on all valve equipment. Unlike conventional metal I.D. tags, each Smart Tag has 64K of memory and comes with a Data File that has an imbedded ISA 20.50 Control Valve Data Sheet and a recorded Maintenance History File.

The Smart Tag records and downloads this critical data through our unique One Touch button and wand that directly communicate with our Windows-based software via a standard RS-232 serial port connection.

Each valve package using the Status Smart Tag will have all specifications and maintenance history for viewing and downloading to a database storage area – **all at the touch of a button.**

STATUS
File Edit Administration Help
Fugitive Emissions | Valve Maintenance | ISA Data | Performance Data | Utilities

Spec No: BEOHTEL 12345 Rev No: _____
PD No: MEP1234 Date: 8/5/98
By: MEP Chk'd: HIM App'd: HER
No. Date By: Revisor:

Control Valve Data Sheet PD 101A

1 Tag No: CV-101A Service _____
P and ID: PID-101A Fluid _____ Ckt. Press PC: _____

Service Conditions	Units	Max Flow	Norm Flow	Min. Flow	Shut Off
2 Flow Rate	GPM	350	300	250	
3 Inlet Pressure	PSIG	20	40	65	100
4 Outlet Pressure	PSIG	5	5	5	0
5 Inlet Temperature	F	100	75	75	
6 Spec Wt./Spec Grav./Mol. Wt.	SG	95	95	95	
7 Viscosity/Spec Heats Ratio	lU	1000	1000	1000	
8 Vapor Pressure Pv	Pv	98	98	98	
9 *Required Cv	Cv	295	175	160	
10 *Travel	%	100	50	20	0
11 Allowable/Predicted SPL	dBa	95/80	95/75	95/60	
12					

Line _____ Actuator _____

13 Pipe Line Size _____ In: 3 _____ 53 *Type: RACK AND PINION
14 and Schedule _____ Out: 3 _____ 54 *Mfr/Model: BETTIS RPC-150
15 Pipe Line Insulation _____ 55 *Size: N/A EH Area: N/A

Valve/Bonnet _____



Smart Tag Data Files Include:

- ISA 20.50 Control Valve Data Sheet
- Purchase date and reference number
- Application data for the process
- Valve type
- Valve ID number
- Mounted accessories
- Special notes relative to the specific package.

Smart Tag Maintenance File Includes:

- Date and time of repair
- Type of repair
- Technician identification
- Password protection

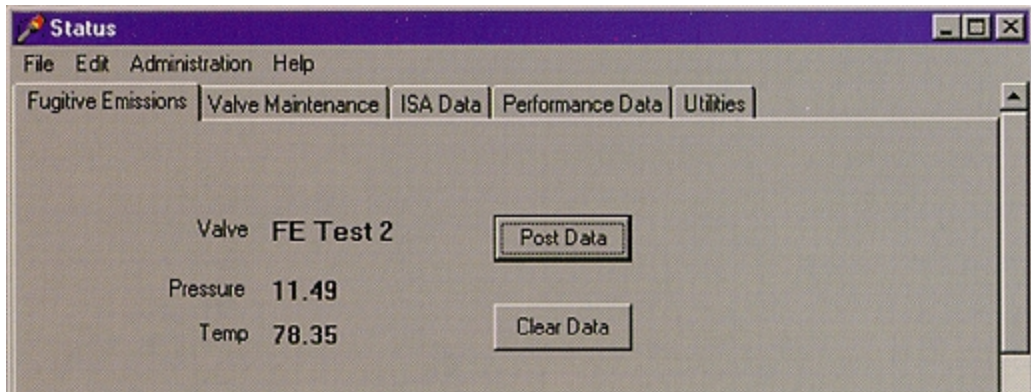


WatchDog™ Fugitive Emissions Monitor

The Status WatchDog Fugitive Emissions Monitor threads directly into the tapped port between the dual packing glands of a severe service valve stem. Unlike today's conventional sniffer technology, WatchDog alerts operators of a valve stem sealing problem **before** a fugitive emission occurs.

WatchDog incorporates a dual sensor technology to monitor the pressure and temperature of a valve's packing gland. WatchDog records and downloads this critical data through our unique One Touch button and wand that communicate directly with our Windows-based software via a standard RS-232 serial port connection.

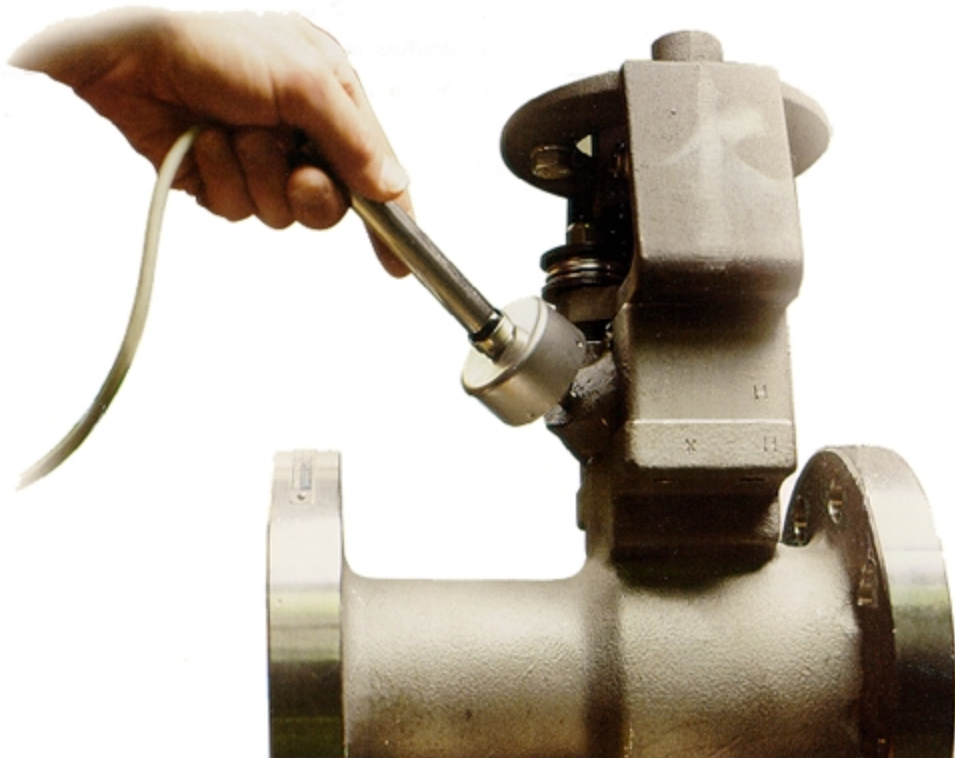
Each valve package using the Status WatchDog Fugitive Emissions Monitor will have critical valve stem packing gland pressure and temperature data, specifications and maintenance history for viewing and downloading to a database storage area – **all at the touch of a button.**



The WatchDog Fugitive Emissions Monitor is contained in a stainless steel housing with a 1/8" NPT pipe connection that threads directly into the packing gland. Various material options are available for the process connection.

WatchDog Fugitive Emissions Package Includes:

- Stem packing gland pressure and temperature monitors
- Built-in ISA data sheet
- Records all packing gland temperatures and pressures
- Complete valve package information and maintenance history
- Password protection



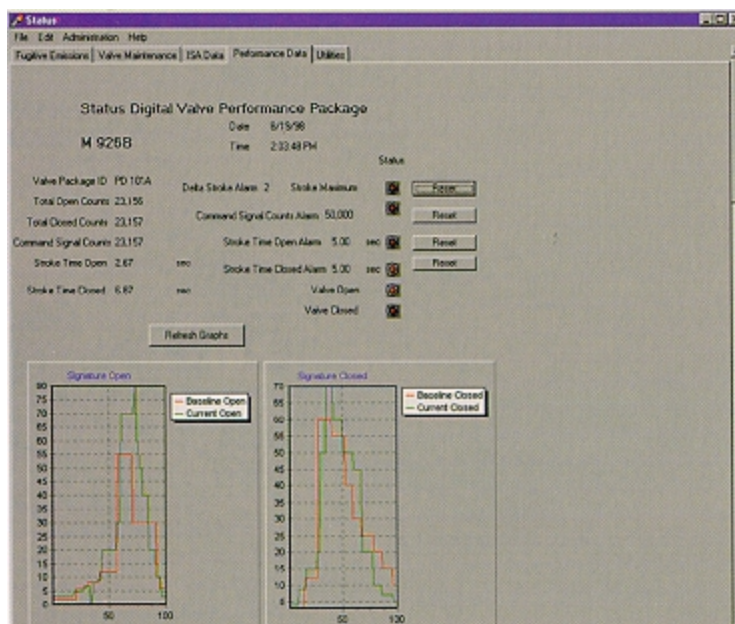
SIGNATURE™ Valve Performance Diagnostics

Status Signature™ Valve Diagnostics Software is integrated with the Lumitech™ Digital Valve Controller to provide real time data for predictive and preventative maintenance.

The Lumitech DVC mounts directly to an ISO/NAMUR automated valve package to provide critical valve performance feedback. The Lumitech DVC comes complete with a low power solenoid valve, position sensors, and an on-board micro-processor. Using our unique One Touch button and wand to communicate with our patent pending Signature software, TopWorx has created an easy way to put you **in touch with on/off valve performance**.



The Lumitech DVC gives you the ability to predict problems before they happen with features like stroke count, stroke time, command signal count, presets for predictive maintenance, various alarm options, and a unique analysis of the open and closed signatures.



Signature Valve Performance File Includes:

- Valve full open counts
- Valve full closed counts
- Command signal counts
- Stroke time to open
- Stroke time to close
- Open Signature recognition
- Closed Signature recognition
- Built-in ISA data sheet
- Optional WatchDog records all packing gland temperature and pressures
- Complete valve package information and maintenance history

In Touch With Valve Performance

A New Standard For Valve Information

Status is a revolutionary new Valve Diagnostics Program from TopWorx that allows easy exchange of critical valve package information. It



provides a secure, paperless system that maintains important valve maintenance and performance data records. All to enhance the safe operation and reliability of the process valve equipment installed in your plant.

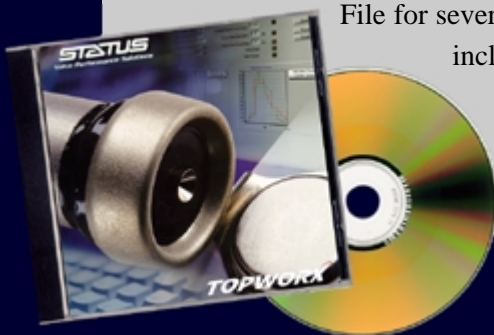
All At The Touch Of A Button

Valve maintenance and performance data can be accessed quickly and easily by our One Touch™ data button through a hand-held wand connected to a standard serial port on our Windows-based operating system. Each of the Status products have our unique One Touch button and wand system. This allows for easy password-protected exchange of information that can be viewed or stored for reference at a later time.

User-Friendly Software Makes it Easy

All data is compiled in a unique, stand-alone, user-friendly software package. Three different levels of Status application software are available. Our Smart Tag program includes a basic Data File and Maintenance File. Our WatchDog program adds a Fugitive Emissions

File for severe valves. Our Signature program includes a Performance File which records valve package performance criteria each time a technician touches the data button.



*For More detailed information or
to receive a full catalog, contact:*



Don Johns Engineering

Email: customerservice@donjohnsengr.com

www.donjohnsengr.com

TOPWORX

www.topworx.com

info@topworx.com E-mail

GO[®]
SWITCH

Leverless Limit Switches

Lumitech[™]

Bright Ideas In Valve Control

STATUS[™]

Valve Performance Solutions

TopWorx reserves the right to change information listed in this brochure without notice. ©TopWorx, Inc. All Rights Reserved.

Go Switches, Leverless Limit Switches, SubSea, HiTemp, We GO to Extremes, Lumitech and Status are all trademarks of TopWorx, Inc.