

GO[®]
SWITCH

GO SENSING AREAS

*Leverless
Limit
Switches*



Leverless Limit Switches for Harsh Environments

We GO To Extremes.

GO Switch Leverless Limit Switches are designed and built to perform under extreme conditions in the harshest environments - no matter how hazardous, wet, corrosive or abusive. What makes GO Switches unique is that our switches operate by magnetism. They require no power supply. There are no arms or levers to break or jam. The result is simple: wear and tear is eliminated.

GO Switch Leverless Limit Switches are the solution to your most difficult applications.

Hazardous Areas

Our hazardous area switches are explosion proof and intrinsically safe. They're built to withstand the rigors of operation in chemical plants and other hazardous areas. NEMA 4, 4X, 7, 9, UL, CSA, FM, CENELEC, SAA, CE Mark, Non-Incendive, and Hermetic Seal available.

Wet Environments

One-piece stainless steel construction keeps all moisture out. Our exclusive SubSea underwater switches are designed for continuous submersion. All models feature 1,000 PSI washdown capability and custom-engineered models can be made to withstand 10,000 PSI, depths over 21,000 feet and temperatures as low as -75°F.

NEMA 4, 4X, 316 stainless steel available.

Corrosive Conditions

All moving parts are totally enclosed and permanently sealed in solid stainless steel to provide accurate proximity sensing and reliable control data under the most corrosive conditions. A special epoxy coating can be applied for even further protection.

NEMA 4, 4X, 316 stainless steel available.

Abusive Applications

Each model is handmade from impact-resistant stainless steel or brass with no stress points and no delicate electronics. Standard switches can handle extreme temperatures from -40°F to 221°F. Special models have even been proven to -75°F and 400°F.

To learn more about how GO Switch Leverless Limit Switches can save you time and money, call us today.

We'll GO to extremes to serve you.



Hazardous Areas



Wet Environments

Leverless Limit Switches for Harsh Environments



Corrosive Conditions

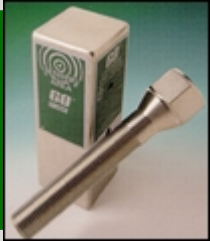


Abusive Applications



In The Bin

Most likely models to find in stock



General Purpose

Square Housing

11-12110-00 Terminal Block
11-12518-A2 3 ft. leads
11-12528-DCA 3 pin Quick Disconnect
81-20518-A2 DPDT

Round Housing

73-13528-A2
73-13528-DCA
7G-23528-A2

Explosion Proof

Class I, II, III Groups A, B, C, D, E, & G
Division 1

Square Housing

11-12523-A2 UL, 3 ft. leads
81-20523-A2 UL, DPDT
11-12524-A2 CSA, 3 ft. leads
81-20524-A2 CSA, DPDT

Round Housing

73-13523-A2
7G-23523-A2
73-13524-A2
7G-23524-A2

Class I, II, III Groups A, B, C, D, E, & G
Division 2

11-12110-00 Terminal Block
11-12516-A2 3 ft. leads
81-20516-A2 DPDT

73-13526-A2
7G-23526-A2

High Temperature

Square Housing

11-11522-F2
350°F/176°C

3 ft. leads

Round Housing

73-13522-F2
400°/204°C

For More detailed information or
to receive a full catalog, contact:



Don Johns Engineering

1312 West Lake Street
Chicago, IL 60607
Phone 312.666.3535
Fax: 312.666.0777

7919 Third Street Road
Louisville, KY 40214
Phone 502.366.3535
Fax 502.368.2221

Email: customerservice@donjohnsengr.com

www.donjohnsengr.com

TOPWORX

www.topworx.com

info@topworx.com E-mail

GO[®] SWITCH

Leverless Limit Switches

Lumitech™

Bright Ideas In Valve Control

STATUS™

Valve Performance Solutions

TopWorx reserves the right to change
information listed in this brochure without
notice. ©TopWorx, Inc. All Rights Reserved.

Go Switches, Leverless Limit Switches,
SubSea, HiTemp, We GO to Extremes,
Lumitech and Status are all trademarks of
TopWorx, Inc.